

River maintenance and flood prevention - April 2026 to March 2027

Wendling Beck (Upper and Lower) - Spring 2026

What We Do

The Environment Agency inspect and maintain rivers and flood defences. We target this work to reduce the risk of flooding to people and property.

Landowners are responsible for maintaining rivers. You can find more information on rights and responsibilities by visiting:

<https://www.gov.uk/guidance/owning-a-watercourse>

Our maintenance work keeps rivers and flood defences working together to prevent flooding. Regular maintenance ensures flood defences work effectively when needed and last longer.

You will see us clearing blockages in rivers, cutting back vegetation and keeping our structures tidy and in good working order.

Maintenance In Your Area

You can see on the map where we are working on the rivers near you. We have planned the following maintenance:

Targeted Channel Maintenance

We prevent blockages and flooding by removing carefully selected branches and debris. We try to leave as much as we can, as it is good habitat.

We usually use hand tools to do this and work from a boat.

Weed Cutting

River weed is cut in specific locations to improve water flow. This can help prevent flooding.

We cut weed in a meandering pattern that follows the natural path of the river. This creates a clear way for water to flow and leaves habitat.

Weed boats, amphibious machines and tracked plant working from the bank are used for this work.

Tree Works

Sometimes we need to remove part or all of a tree when it leans into a river or falls over. They can slow water flow causing flooding upstream or debris can cause blockages downstream.

Fish and eels use branches and roots in the water for habitat and breeding. Trees also provide shade that keeps water temperatures steady and prevents too much weed growing.

We remove as little of the tree as possible whilst making sure we are still preventing flooding.



We carefully remove weed from rivers to prevent flooding and avoid disturbing wildlife.

Contact Us

Feel free to contact us if you have comments or questions about our work.

Norfolk Asset Performance Team

apnorfolk@environment-agency.gov.uk

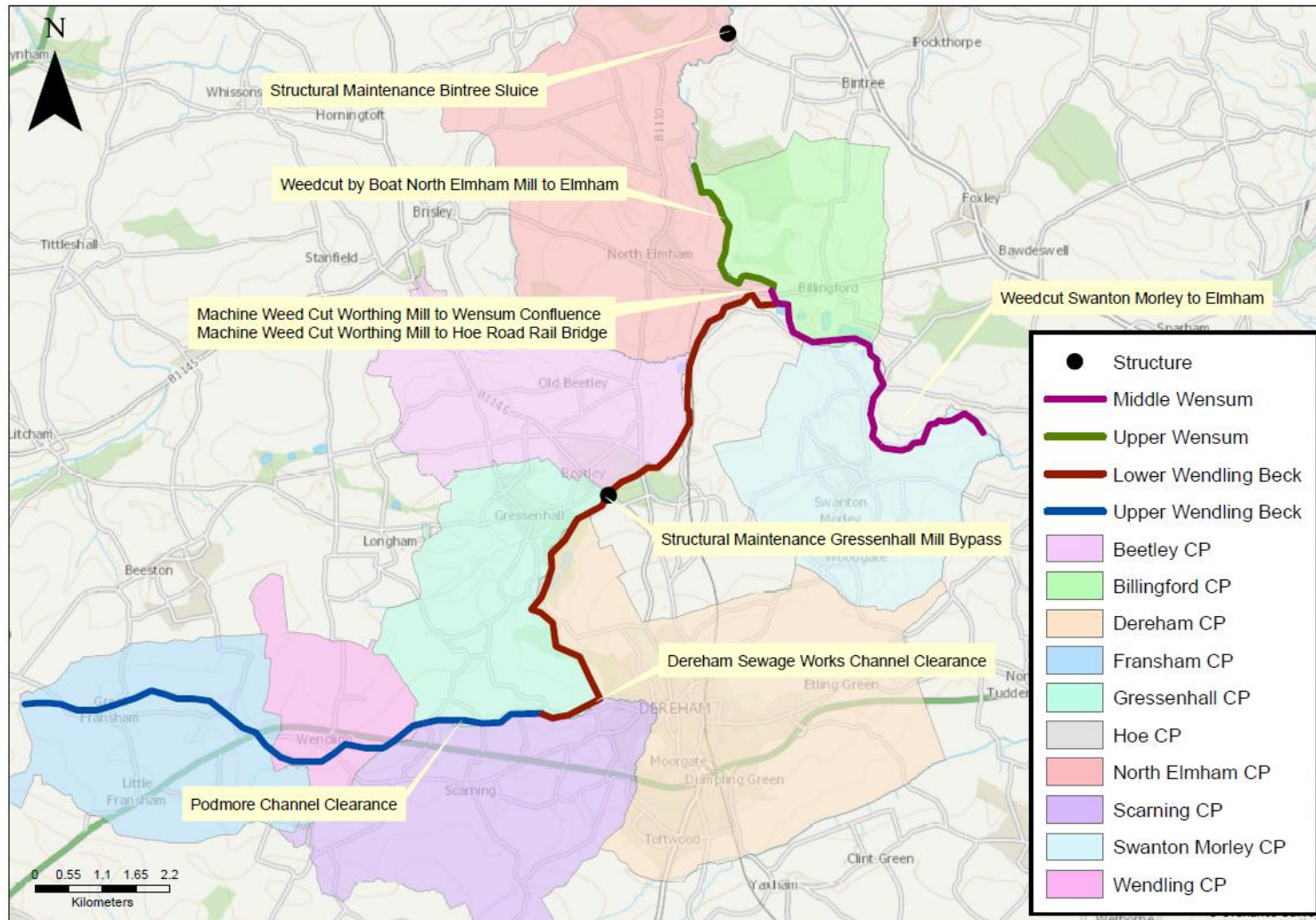
Environment Agency, Dragonfly House, 2 Gilders Way, Norwich, Norfolk NR3 1UB. 020302 55460

03708 506 506 (Monday-Friday, 08:00-18:00)

customer service line
03708 506 506

incident hotline
0800 80 70 60

floodline
03459 88 11 88



© Environment Agency copyright and/or database rights 2022. © Ordnance Survey copyright and/or database rights 2022. All rights reserved.